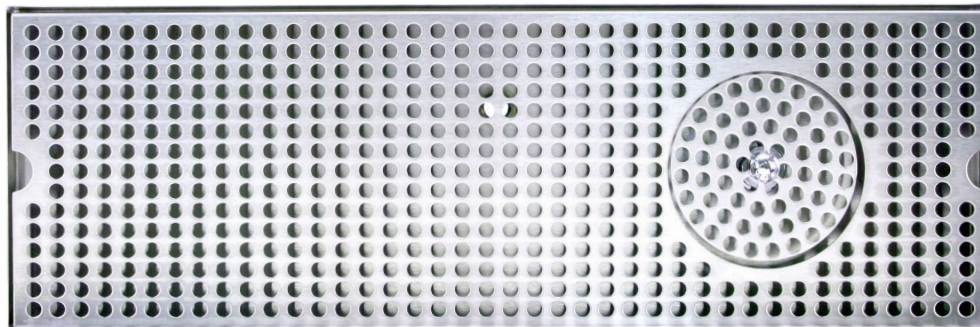
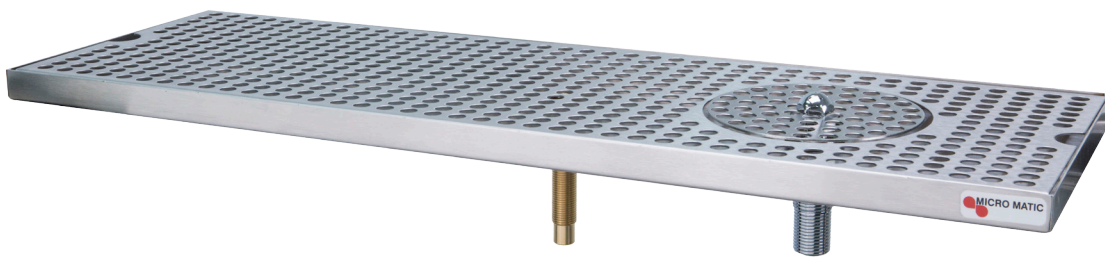




DRIP TRAY

SURFACE MOUNT SERIES 8" X 24"

- Add European style while creating dispense excitement.
- Condition the glass before pouring – invert glass, push down on sprayer for cold water rinsing.
- More space with 8" width, robust 18 gauge stainless steel construction.
- Welded corners, finished smooth for safety and appearance.



DP-820D-24GR

Brushed Stainless Steel



Stainless Steel for improved hygiene and durability.

www.micromatic.com • 1 (866) 327-4159

8" WIDTH TRAY WITH GLASS RINSER

Job Number: _____ Location: _____

Part No.	Dimensions	Description	Shipping Weight	Box Dimensions
DP-820D-24GR	8"W x 24"L x 3/4"H	Stainless Steel Drip Tray includes a pipe thread drain nipple (3 1/2" x 5/8 -18) 1/2" I.D. drain hose will attach to drain nipple.	TBD	TBD

Rinser Water Inlet Installation

- Always check local plumbing codes first.
- Install in-line water regulator set at 15 PSI from the street water supply (no greater, perfect operating pressure).
- Install in-line one way check valve from the street water supply (prevents pressure drop which can cause leaking).
- Install in-line shut-off for the rinser system from the street water supply (this must be turned off nightly).
- If teed into soda system make sure system can handle the increased water demand. Have plumber install a 45° 1/2" O.D. barb for the drains if line is not hard plumbed into the system.
- Install a shut-off for the rinser water supply if line is not hard plumbed into the system.

Dimensions

